



Smiddy Cottage is a striking and refurbished former farm cottage with spectacular coast and sea views. Finished to a high standard, the property is currently a family home and would also be ideal as a holiday let or weekend retreat.

Redheugh Cottages, Redheugh Farm, Scottish Borders, TD13 5YS

 2  2  3

 142 sqm

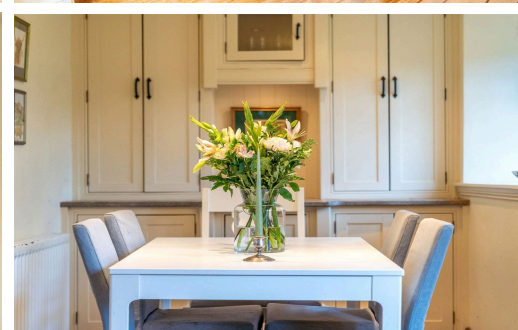
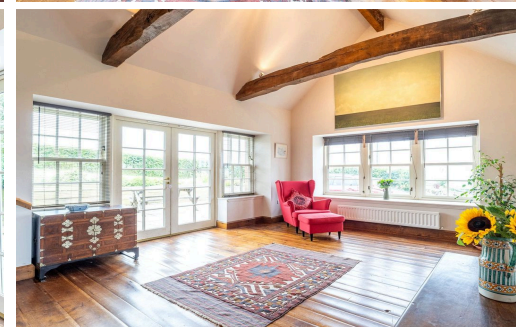
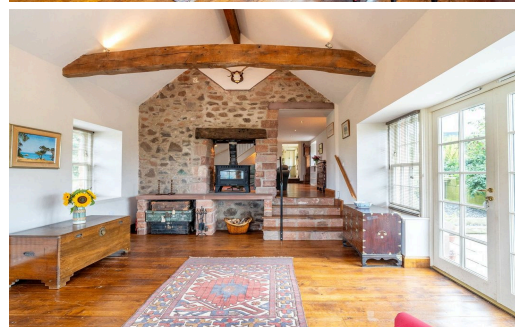
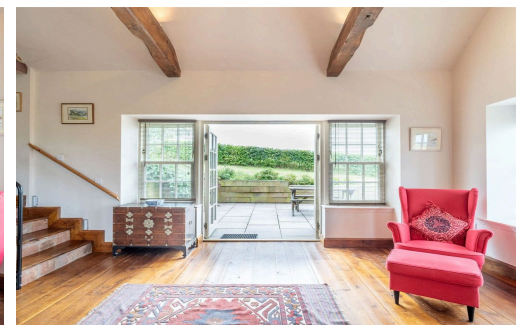
Offers Over £345,000

Redheugh Cottages, Redheugh Farm, Scottish Borders,
TD13 5YS

Offers Over £345,000

 2  2  3  142 sqm

PATON & CO
ESTATE AGENTS



Redheugh Cottages, Redheugh Farm, Scottish Borders,
TD13 5YS

Offers Over £345,000

 2  2  3  142 sqm

PATON & CO
ESTATE AGENTS

About this property

Entering the cottage, the reclaimed oak flooring sets the tone in the welcoming entrance hall, which includes a convenient cloakroom/WC and a built-in cupboard with plumbing for a washing machine.

The heart of the home lies in the impressive kitchen/dining room, where the oak flooring continues, and French doors open to the secluded rear garden. The kitchen features high-quality units with granite work surfaces, a central island, and a Raeburn stove that provides central heating and hot water. An electric hob and combination oven/microwave complete the space, with steps leading to the spacious living room.

The living room, bathed in natural light, features integral down-lights and a multi-fuel burning stove set within a shared stone chimney breast extending into the sunroom.

The sunroom, with its vaulted ceiling and exposed beams, offers panoramic sea and garden views through French doors leading to a paved patio. This space continues the reclaimed oak flooring, adding warmth and character to the cottage's interior.

Upstairs, the landing provides access to both bedrooms and includes a large built-in storage cupboard and skylight.

The master bedroom impresses with generous proportions, exposed beams, ample storage and French doors that lead to a Juliet balcony overlooking stunning vistas'. The en-suite bathroom features a freestanding roll-top bath, a double walk-in shower, wash hand basin, and WC. Bedroom 2, also a double room, offers a

dressing room, a window overlooking the rear garden, and patio doors to another Juliet balcony. Its en-suite shower room includes a walk-in shower cubicle, wash hand basin, and WC.

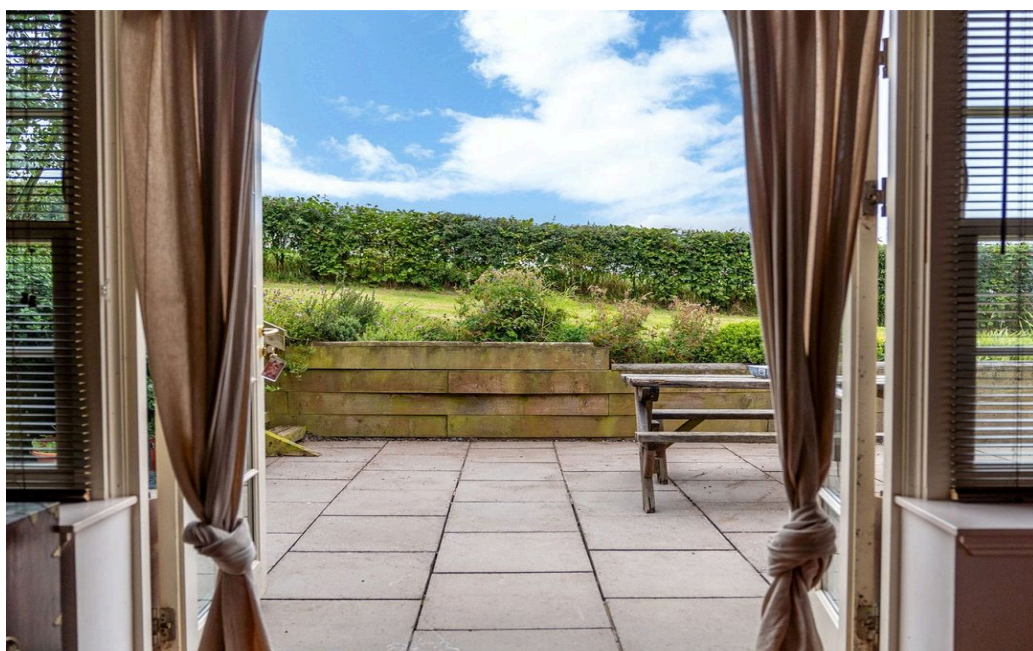
Outside, the cottage boasts a well-maintained lawned garden and a large, paved patio area ideal for enjoying the sea views. Gravelled car parking and double gated access further enhance the practicality and appeal of Smiddy Cottage's outdoor space, completing this idyllic coastal retreat.

Redheugh Cottages, Redheugh Farm, Scottish Borders,
TD13 5YS

Offers Over £345,000

 2  2  3  142 sqm

PATON & CO
ESTATE AGENTS



Redheugh Cottages, Redheugh Farm, Scottish Borders,
TD13 5YS

Offers Over £345,000

 2  2  3  142 sqm

PATON & CO
ESTATE AGENTS

Plans

Approx. gross internal floor area
142 square meters

Accommodation Comprises

Ground Floor

Reception Hall, Kitchen / Dining Room, Family Sitting Room, Sun Room, WC

First Floor

Master Bedroom (En Suite Bathroom), Bedroom 2 (En Suite Shower Room)

Garden Grounds

Private Driveway, Front and Rear Garden



3 REDHEUGH COTTAGES, TD13 5YS
NOT TO SCALE - FOR ILLUSTRATIVE PURPOSES ONLY
APPROXIMATE GROSS INTERNAL AREA 1,528 SQ FT / 142 SQ M
All measurements and fixtures including doors and windows are approximate and should be independently verified.
Copyright © Nest Marketing
www.nest-marketing.co.uk

Redheugh Cottages, Redheugh Farm, Scottish Borders,
TD13 5YS

Offers Over £345,000

 2  2  3  142 sqm

PATON & CO
ESTATE AGENTS

Local Area

Smiddy Cottage sits on an elevated position on the Berwickshire coastline, with breathtaking sea and rugged landscape views. The property offers a great deal of seclusion and privacy and sits comfortably within its garden grounds.

The attractive local village of Cockburnspath has a newsagent, general store, post office, garage, bowling club, active village hall and an excellent Primary School.

Around 6.5 miles from Smiddy Cottage lies the historic village of Coldingham. Coldingham is a vibrant village, framed around the 15th century Priory and lying within a short walk of Coldingham Sands. Although nearby Berwick upon Tweed offers an excellent range of nations supermarkets and services, the Village of Coldingham has a fantastic local Spar, a well-regarded butcher, two lively pubs and a fish and chip shop which would all love your support. The village also offers a post office, an antiques shop, and a very well-regarded primary school. Further schooling is on the doorstep with Eyemouth High School being only a short drive away. Belhaven Hill School in Dunbar and Longridge Towers School near Berwick are both very well thought of public schools in the area.

Smiddy Cottage is within a short drive of the popular Coldingham Sands beach and the dramatic St Abbs Head National Nature Reserve. The village of Reston is also

nearby, where Reston Train Station offers a regular service into Edinburgh and is a sub-station of the main East Coastline connecting London to Aberdeen.

There are a number of larger towns near Smiddy Cottage, the closest being Eyemouth which is approximately 9.5 miles to the South. Eyemouth is a fishing port with a picturesque harbour and a sandy beach. It has an excellent range of amenities including a Co-op supermarket and a range of local shops including a first-class butcher, home bakery and fishmonger. Leisure facilities include a swimming pool and fitness centre, several public houses, and restaurants and a marine activities such as diving.



Redheugh Cottages, Redheugh Farm, Scottish Borders,
TD13 5YS

Offers Over £345,000

 2  2  3  142 sqm

PATON & CO
ESTATE AGENTS

Location

Distances

Cockburnspath 3.5 miles, Coldingham Village 6.5 miles, St Abbs 7.5 miles, Dunbar Train Station 12.5 miles, Eyemouth 9.5 miles, Reston Train Station 8 miles, Berwick upon Tweed Train Station 17 miles, Edinburgh Airport 49 miles, Newcastle upon Tyne 80 miles.
(distances are approximate).

What3Words



Redheugh Cottages, Redheugh Farm, Scottish Borders,
TD13 5YS

Offers Over £345,000

 2  2  3  142 sqm

PATON & CO
ESTATE AGENTS

Key Information

Local Authority

Scottish Borders Council

Council Tax

Band = D

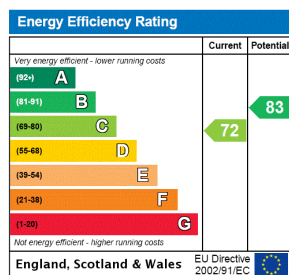
Tenure

Freehold

EPC

PROPERTY

EPC Rating = C



General Remarks

Agents Note

Please be aware that the access road down to the cottage is a farm track.

Services

- Mains electric and water.
- Drainage to a private septic tank
- Oil fired central heating.
- Electric Underfloor Heating in EnSuites.
- Broadband services are available.

Fixtures and Fittings

All integrated appliances, fitted carpets, curtain poles, blinds, and light fittings except the light fittings from kitchen, sunroom and stairwell, form part of the sale.

Listing and Conservation

Smiddy Cottage is not listed or in a conservation area.

Internet Web Site

This property and other properties offered by Paton & Co can be viewed on the following websites:

www.patonandco.com / www.rightmove.co.uk / www.zoopla.co.uk / www.onthemarket.com / www.primelocation.com

Redheugh Cottages, Redheugh Farm, Scottish Borders,
TD13 5YS

Offers Over £345,000

 2  2  3  142 sqm

PATON & CO
ESTATE AGENTS

Enquire



Chloe Riva
Paton & Co
01289542400
chloe@patonandco.com



View Digital Brochure



Property Search



Book a valuation

Compliance

All successful bidders will be subject to third party proof of funding and AML (Anti Money Laundering) checks. These checks will consist of proof of address, proof of ID and proof of how the purchase is being funded. Please note there will be a charge of £25 + Vat per individual.

Misrepresentations

1. The property is sold with all faults and defects, whether of condition or otherwise and neither the seller nor Paton & Co, the selling agent, are responsible for such faults and defects, nor for any statement contained in the particulars of the property prepared by the said agent.
2. The Purchaser(s) shall be deemed to acknowledge that he/she has not entered into contract in reliance on the said statements, that he/she has satisfied himself as to the content of each of the said statements by inspection or otherwise and that no warranty or representation has been made by the seller or the said agents in relation to or in connection with the property.
3. Any error, omission, or misstatement in any of the said statements shall not entitle the purchaser(s) to rescind or to be discharged from this contract, nor entitle either party to compensation or damages nor in any circumstances to give either party any cause for action.

Important Notice

Paton & Co, their clients and any joint agents give notice that:

1. They are not authorised to make or give any representations or warranties in relation to the property either in writing or by word of mouth. Any information given is entirely without responsibility on the part of the agents or the sellers. These particulars do not form part of any offer or contract and must not be relied upon as statements or representations of fact.
2. Any areas, measurements or distances are approximate. The text, photographs and plans are for guidance only and are not necessarily comprehensive and it should not be assumed that the property remains as photographed. Any error, omission or misstatement shall not annul the sale, or entitle any party to compensation or recourse to action at law. It should not be assumed that the property has all necessary planning, building regulation or other consents, including for its current use. Paton & Co have not tested any services, equipment, or facilities. Purchasers must satisfy themselves by inspection or otherwise and ought to seek their own professional advice.
3. All descriptions or references to condition are given in good faith only. Whilst every endeavour is made to ensure accuracy, please check with us on any points of especial importance to you, especially if intending to travel some distance. No responsibility can be accepted for expenses incurred in inspecting properties which have been sold or withdrawn.
4. The property is sold subject to and with the benefit of all servitude rights, burdens, reservations, and wayleaves including rights of access and rights of way, whether public or private, light, support, drainage, water and wayleaves for masts, pylons, stays, cable, drains and water, gas and other pipes whether contained in the title deeds or informally constituted and whether or not referred to above.
5. These particulars and plan are believed to be correct, but they are in no way guaranteed. Any error, omission or misstatement shall not annul the sale or entitle any party to compensation nor in any circumstances give grounds for action at law.
6. Paton & Co UK Ltd does not accept responsibility for any expenses incurred by prospective purchasers in inspecting properties which have been sold, let, or withdrawn.

Viewing strictly by appointment

Photos taken: August 2024

Published: August 2024

Property Ref: PAT240012

powered by

FluxPro